

Quick Start Guide

Moving Equipment Units to Different Worksites

○ Objectives:


- 1** Access the equipment tab
- 2** Learn how to move equipment units
- 3** Move equipment units to a different worksite




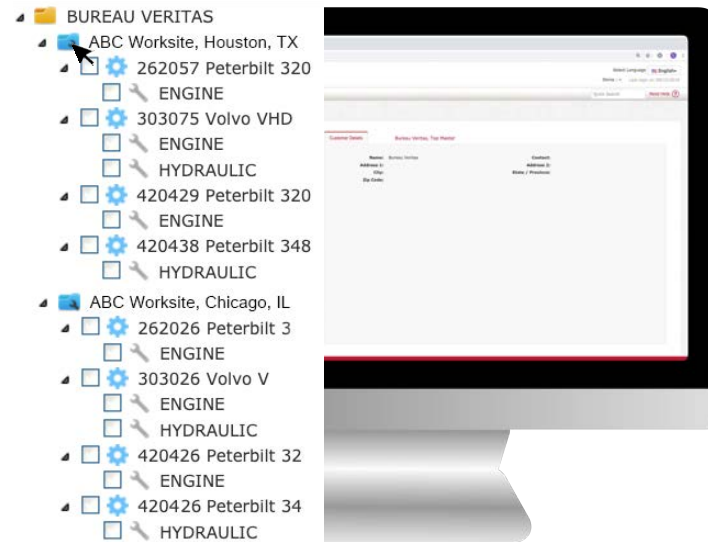
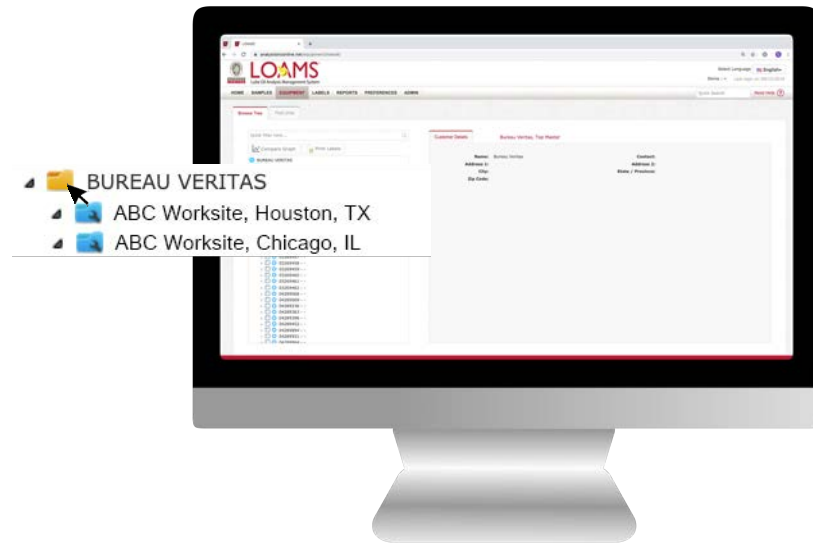
Moving Equipment Units

- Moving equipment units is possible by following 5 simple steps.

1 The first step to move a unit to a new worksite begins by clicking the equipment tab and moving your cursor to the browse tree tab.


2 Click the master account folder  to open the browse tree hierarchy.

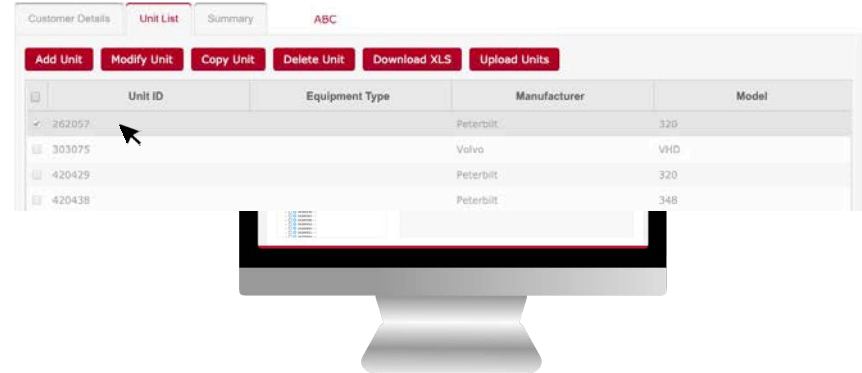
3 Now, click the worksites folder  to find the unit you plan to move.



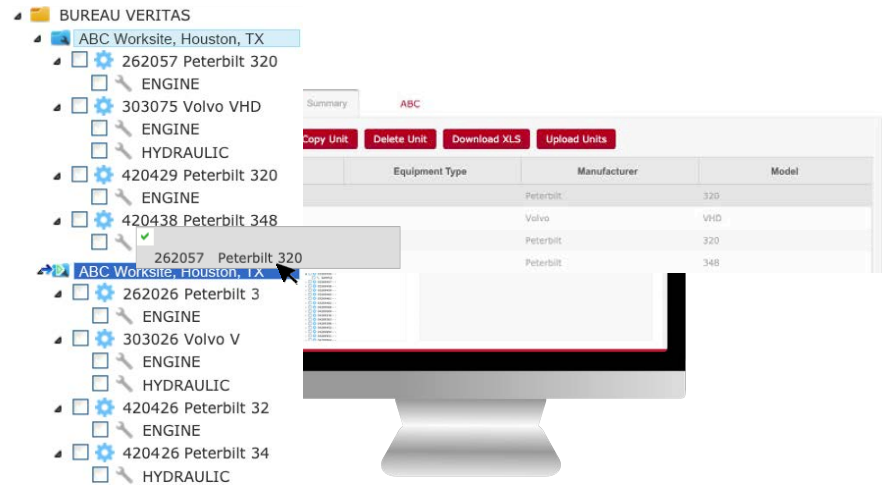


Moving Equipment Units

4 After clicking the worksites folder , you'll see the components details, unit list and summary tabs. Click on the unit list and then click on the unit you plan to move. This action will highlight the unit you have selected.








5 Once the unit is selected, hold click and drag the unit to the worksite folder you plan to move the unit into; release click when you have hovered the correct worksite folder. Once you have dropped the folder, the move unit window will appear. Click the yes button to confirm the unit move. You have successfully moved an equipment unit in LOAMS.



Please note, as you move a unit from one worksite to another, you'll notice that the worksite folder where you are moving a unit from will be highlighted in light blue. Also, as you hover to the worksite that you are moving your unit into, the worksites folder will highlighted in dark blue.



LOAMS — The Lube Oil Analysis Management System — by Bureau Veritas gives you access to real-time oil analysis data from your computer, tablet or mobile device. LOAMS is:

-  **Cloud-Based** Multiple graphing functions allow users to create custom graphs to plot trends and compare equipment.
-  **Scalable** LOAMS can be scaled to match your needs.
-  **Configurable** Data access, user permissions and system functionalities can be configured by user or company.
-  **Customizable** Users can customize the application to manage data according to individual needs and preferences.
-  **Simple** User-friendly interface provides a simple and easy-to-use application for all skill levels.



LOAMS SUPPORT DESK

Phone: 1.800.655.4473

Email: LOAMS@us.bureauveritas.com

