

Quick Start Guide

Copying Filters in LOAMS

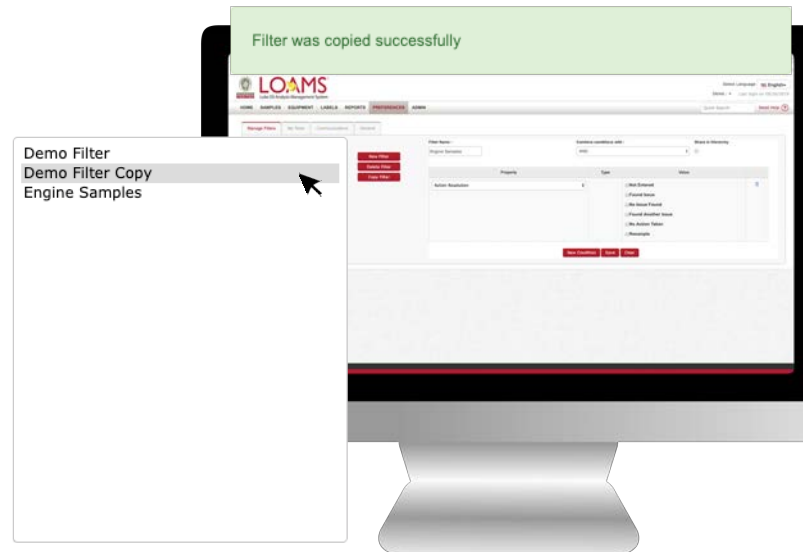
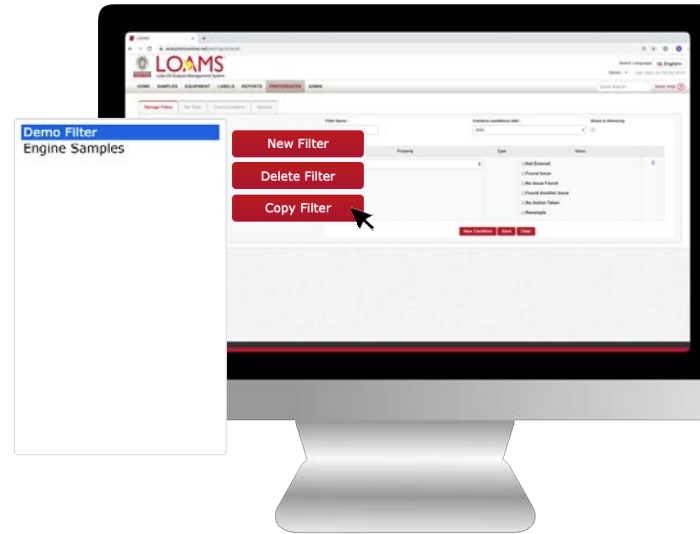
○ Objectives:

- 1** Access the manage filters section
- 2** Explore the copy filter option
- 3** Learn how to copy filters in 3 simple steps

Copying a Filter






- Copying filters in LOAMS is possible by following the 3 steps below:

- 1** Hover your cursor over the preferences tab and select the filters option from the drop down menu.
- 2** Find and select the name of the filter you plan to copy from the filter's box located at the left of your screen.
- 3** Click the copy filter button. This action will create a copy of the filter. You have successfully created a copy of a filter in LOAMS.





LOAMS — The Lube Oil Analysis Management System — by Bureau Veritas gives you access to real-time oil analysis data from your computer, tablet or mobile device. LOAMS is:

-  **Cloud-Based** Multiple graphing functions allow users to create custom graphs to plot trends and compare equipment.
-  **Scalable** LOAMS can be scaled to match your needs.
-  **Configurable** Data access, user permissions and system functionalities can be configured by user or company.
-  **Customizable** Users can customize the application to manage data according to individual needs and preferences.
-  **Simple** User-friendly interface provides a simple and easy-to-use application for all skill levels.



LOAMS SUPPORT DESK

Phone: 1.800.655.4473

Email: LOAMS@us.bureauveritas.com

