

# Quick Start Guide

## Merging Duplicate Components

### ○ Objectives:


- 1** Review the equipment tab
- 2** Learn how to merge duplicate components
- 3** Merge duplicate components to original component files




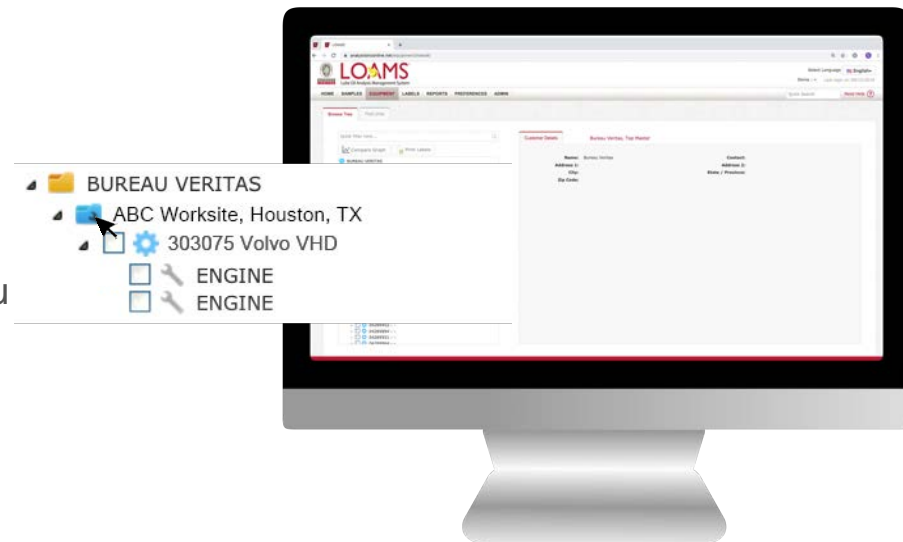
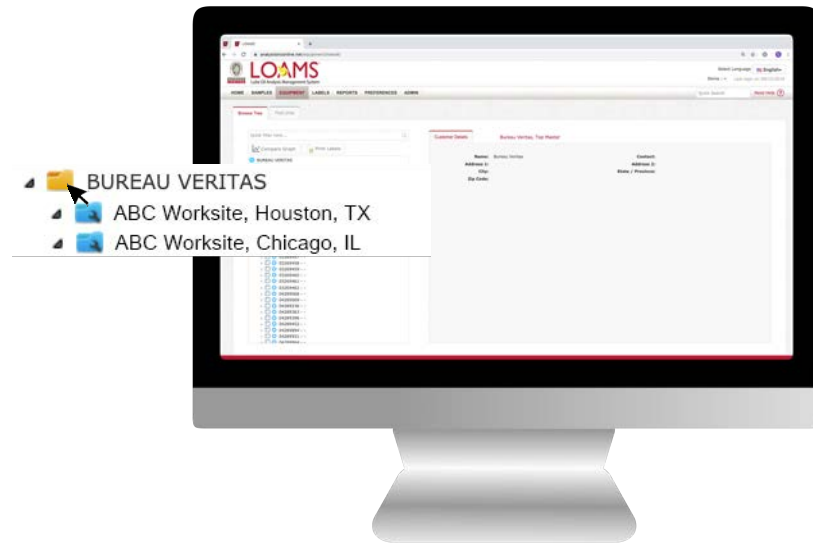
## Merging Duplicate Components

○ Merging duplicate components is possible by following 5 simple steps.


1 The first step to merge a duplicate component to its original component file begins by clicking the equipment tab and moving your cursor to the browse tree tab.

2 Click the master account folder  to open the browse tree hierarchy.

3 Now, click the worksites folder  to find the duplicate component you plan to merge.



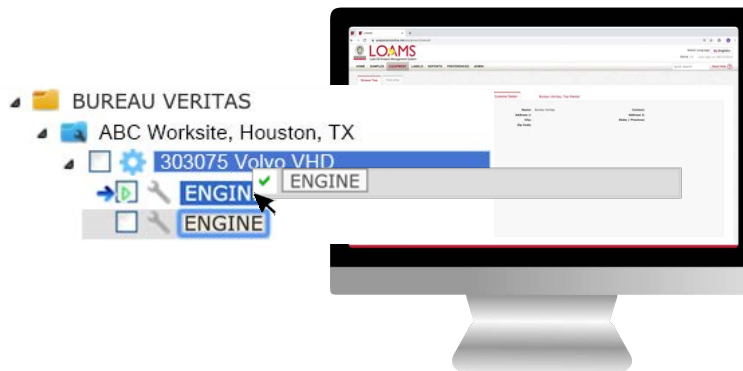
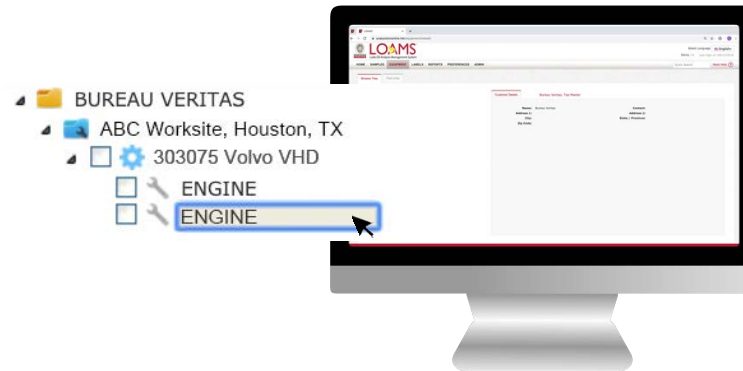
## Merging Duplicate Components

**4** After clicking the worksites folder  click on the duplicate component you plan to merge. This action will highlight the duplicate component you have selected.

**5** Once the duplicate component is selected, hold click and drag the duplicate component to the file you plan to merge the component into; release click when you have hovered to the correct component file. Once you have dropped the file, the merge components window will appear. Click the yes button to confirm the duplicate component merge. You have successfully merged a component in LOAMS.








Please note, as you merge a component, you'll notice that the duplicate component file where you are moving a component from will be highlighted in light brown. Also, as you hover the duplicate component to the file you are merging your component into, the duplicate component's destination file will be highlighted in dark blue.





LOAMS — The Lube Oil Analysis Management System — by Bureau Veritas gives you access to real-time oil analysis data from your computer, tablet or mobile device. LOAMS is:

-  **Cloud-Based** Multiple graphing functions allow users to create custom graphs to plot trends and compare equipment.
-  **Scalable** LOAMS can be scaled to match your needs.
-  **Configurable** Data access, user permissions and system functionalities can be configured by user or company.
-  **Customizable** Users can customize the application to manage data according to individual needs and preferences.
-  **Simple** User-friendly interface provides a simple and easy-to-use application for all skill levels.



## LOAMS SUPPORT DESK

**Phone:** 1.800.655.4473

**Email:** [LOAMS@us.bureauveritas.com](mailto:LOAMS@us.bureauveritas.com)

