



Quick Start Guide

Performing Quick and Advanced Sample Searches

○ Objectives:

- 1** Explore the quick search bar
- 2** Learn how to perform quick searches in 3 easy steps
- 3** Learn how to perform advanced sample searches in 4 easy steps



Quick Search

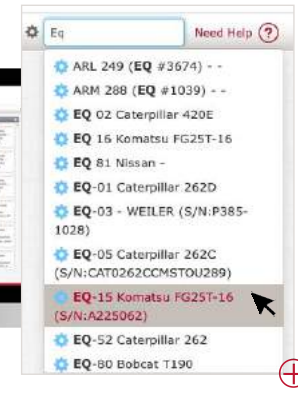
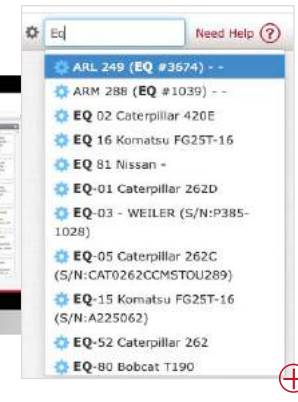
- The Quick Search bar is a powerful tool designed for you to quickly search the LOAMS system and find:
 - ⚙ Your mobile or industrial equipment
 - 🔧 Components tested
 - 🧪 Sample reports
 - 📁 Master account folder
 - 🏠 Worksites
 - 🌐 Commercial divisions
- The Quick Search bar can be easily located in the upper right corner of your screen and is visible in every page that you visit in LOAMS.





Quick Search

- 1 Quick searches are easy to perform. Simply navigate your cursor to the quick search field, click inside the field, and begin typing.
- 2 As you type, you'll notice that the quick search bar will begin to suggest match results that are relevant to the words, numbers or symbols you enter.
- 3 Quickly access more information about your industrial or mobile equipment, components tested, sample results, main account folders, worksites or commercial divisions by clicking the quick search suggestion that matches your search.





Advanced Sample Searches

1 Advanced sample searching is as easy as performing a quick search. Start an advanced sample search by hovering your cursor over the SAMPLES tab.

2 As you hover your cursor over the SAMPLES tab, you'll notice that a drop the menu will appear. Select the SEARCH option from this menu to view the sample search page.

3 The sample search page will contain two tabs. The inbox tab and the search tab. In the search tab, below the field titled Quick filter here, select the text titled [Advanced Search](#).



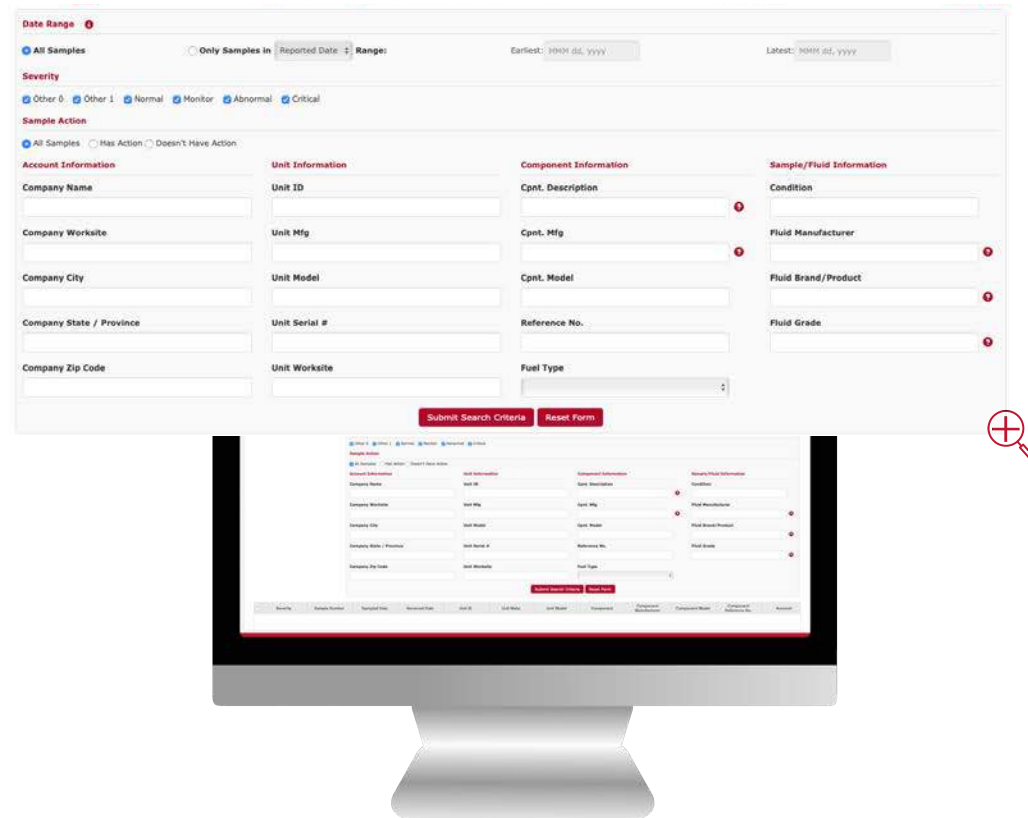


Advanced Sample Searches

4

After selecting the Advanced Search field, you'll quickly discover all the search options available for you to submit advanced sample searches based on the following criteria:






- ✓ Date ranges
- ✓ Severity levels
- ✓ Sample actions
- ✓ Account information
- ✓ Unit information
- ✓ Component information
- ✓ Sample / Fluid information



The screenshot displays a web-based search interface for samples. At the top, there's a 'Date Range' section with a 'Reported Date' field and 'Earliest'/'Latest' date pickers. Below that are 'Severity' and 'Sample Action' sections with radio button options. The main part of the form is organized into four columns: 'Account Information' (Company Name, Worksite, City, State/Province, Zip Code), 'Unit Information' (Unit ID, Mfg, Model, Serial #, Worksite), 'Component Information' (Cpnt. Description, Mfg, Model, Reference No., Fuel Type), and 'Sample/Fluid Information' (Condition, Manufacturer, Brand/Product, Grade). At the bottom of the form are 'Submit Search Criteria' and 'Reset Form' buttons. A magnifying glass icon is positioned to the right of the monitor.



LOAMS — The Lube Oil Analysis Management System — by Bureau Veritas gives you access to real-time oil analysis data from your computer, tablet or mobile device. LOAMS is:

-  **Cloud-Based** Multiple graphing functions allow users to create custom graphs to plot trends and compare equipment.
-  **Scalable** LOAMS can be scaled to match your needs.
-  **Configurable** Data access, user permissions and system functionalities can be configured by user or company.
-  **Customizable** Users can customize the application to manage data according to individual needs and preferences.
-  **Simple** User-friendly interface provides a simple and easy-to-use application for all skill levels.



LOAMS SUPPORT DESK

Phone: 1.800.655.4473

Email: LOAMS@us.bureauveritas.com

